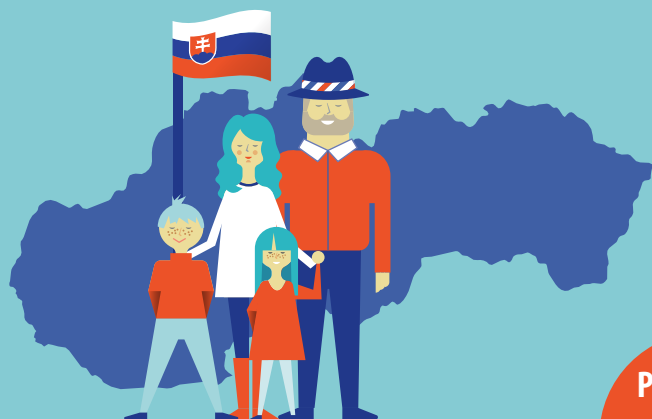


# Slovakia in the EU



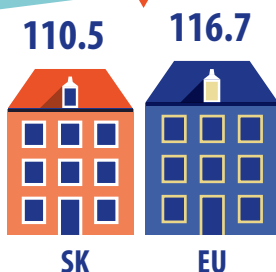
Share in EU area

**1.2%**  
49 036 km<sup>2</sup>

Share in EU population

**1.1%**  
5.4 million inhabitants

Population density (per km<sup>2</sup>)  
2014 data



Share in EU GDP

**0.5%**

GDP per capita



Did you know that...

Slovakia is the **largest EU exporter of cars** relative to its population (**185 cars** exported per 1000 inhabitants).



Slovakia has the **highest share of employed persons working on Sundays (20%)**.

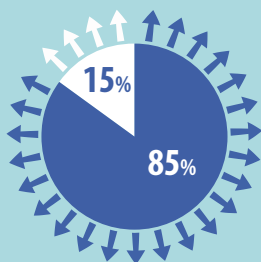
In Slovakia the share of students in upper secondary education **studying at least 2 foreign languages** is significantly higher (**72%**) than the EU average (44%).



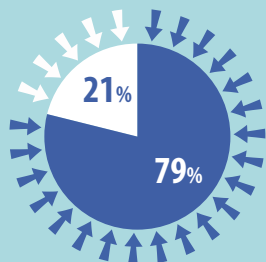
Slovakia has the **second highest share of people who own their dwelling (90% of population)**



Export of goods



Import of goods



● Inside EU  
● Outside EU

Employment rate men (aged 20 to 64)



Employment rate women (aged 20 to 64)



# Slovakia in the EU

On the occasion of the Slovak Presidency of the Council of the European Union (from 1 July 2016), Eurostat, the statistical office of the European Union, releases some indicators and infographics to show Slovakia in comparison with the European Union  
(based on data for 2015)

## July 2016

Indicator	Slovakia	EU	Notes
<b>Economy</b>			
Government surplus/deficit (% GDP)	-3.0	-2.4	
Government gross debt (% GDP)	52.9	85.2	
GDP per capita in PPS (EU = 100)	77.0	100.0	
Tax to GDP ratio	31.2	40.0	2014 data
Annual inflation rate	-0.7	-0.1	May 2016
Investment (gross fixed capital formation as % of GDP)	23.0	19.6	
Share of manufacturing in the economy (value added of manufacturing as % of GDP)	18.8	13.9	
<b>Population and social</b>			
Share of population aged 65 or over	14.0	18.9	
Share of population aged 15-64	70.7	65.5	
Share of population under 15	15.3	15.6	
Fertility rate (children per woman)	1.37	1.58	2014 data
Unemployment rate (total)	10.0	8.6	May 2016
Unemployment rate (less than 25 years)	25.3	18.6	May 2016
Risk-of-poverty or social exclusion (% of population)	18.4	24.4	2014 data
<b>Education</b>			
Tertiary educational attainment total (% of persons aged 30-34)	28.4	38.7	
Tertiary educational attainment women (% of persons aged 30-34)	34.4	43.4	
Tertiary educational attainment men (% of persons aged 30-34)	22.8	34.0	
Early leavers from education (% of persons aged 18-24 years)	6.9	11.0	
<b>Science and Technology</b>			
R&D expenditure (% of GDP)	0.89	2.03	2014 data
Individuals having made a purchase online (% of persons aged 16 to 74)	50.0	53.0	
Employment in high- and medium-high technology manufacturing and knowledge-intensive service sectors (%)	10.6	5.7	
<b>Environment and energy</b> <span style="float: right;">2014 data</span>			
Greenhouse gas emissions including international aviation (% reduction since 1990)	-46	-23	Source: EEA
Share of renewables in final energy consumption	11.6	16.0	
Energy dependency (share of imports in energy consumption)	60.9	53.5	

Issued by: Eurostat Press Office  
Tel: +352-4301-33 444  
eurostat-pressoffice@ec.europa.eu

[ec.europa.eu/eurostat](http://ec.europa.eu/eurostat)  
@EU\_Eurostat

Media requests: Eurostat media support  
Tel: +352-4301-33 408  
eurostat-mediasupport@ec.europa.eu

